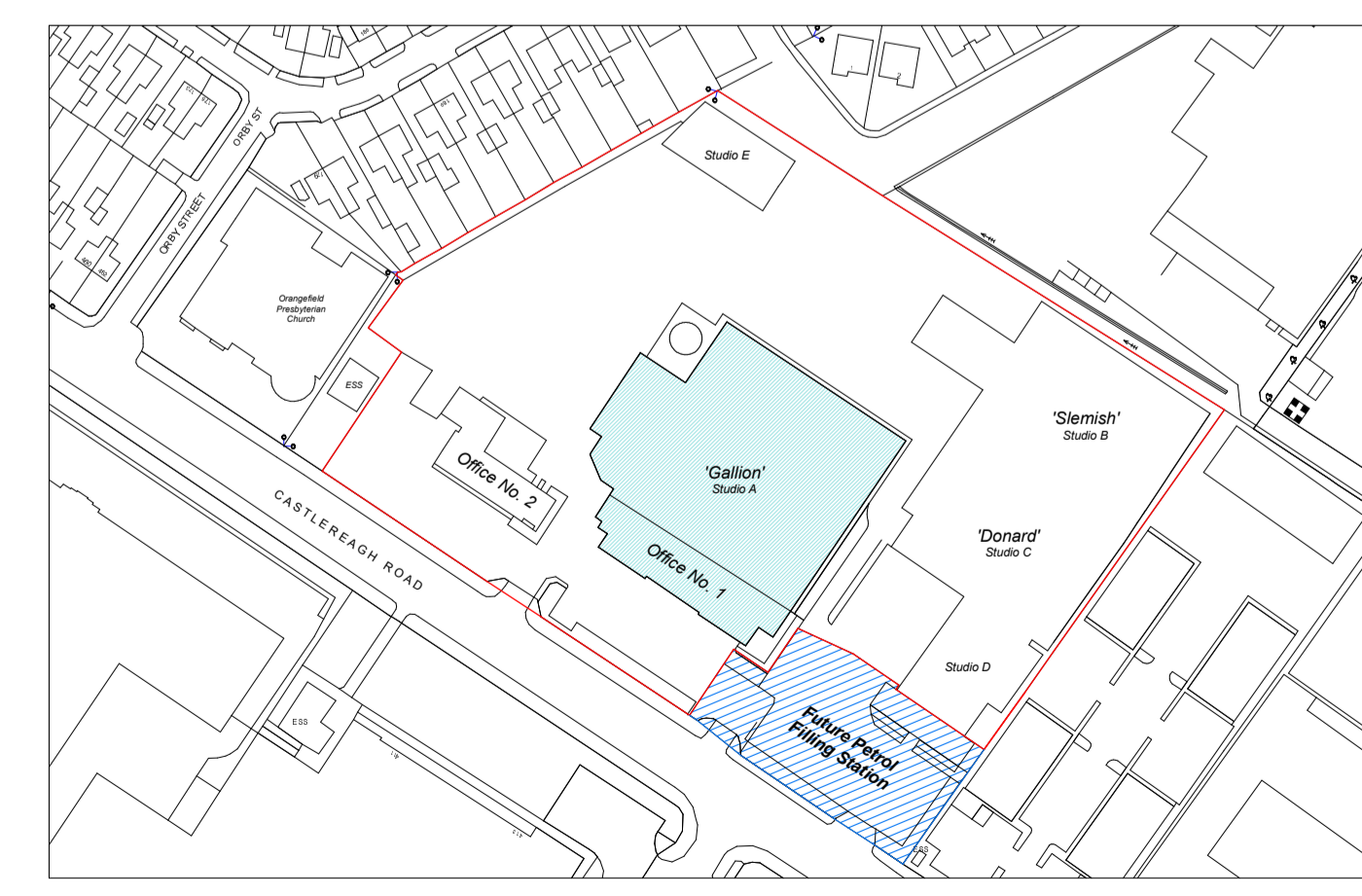
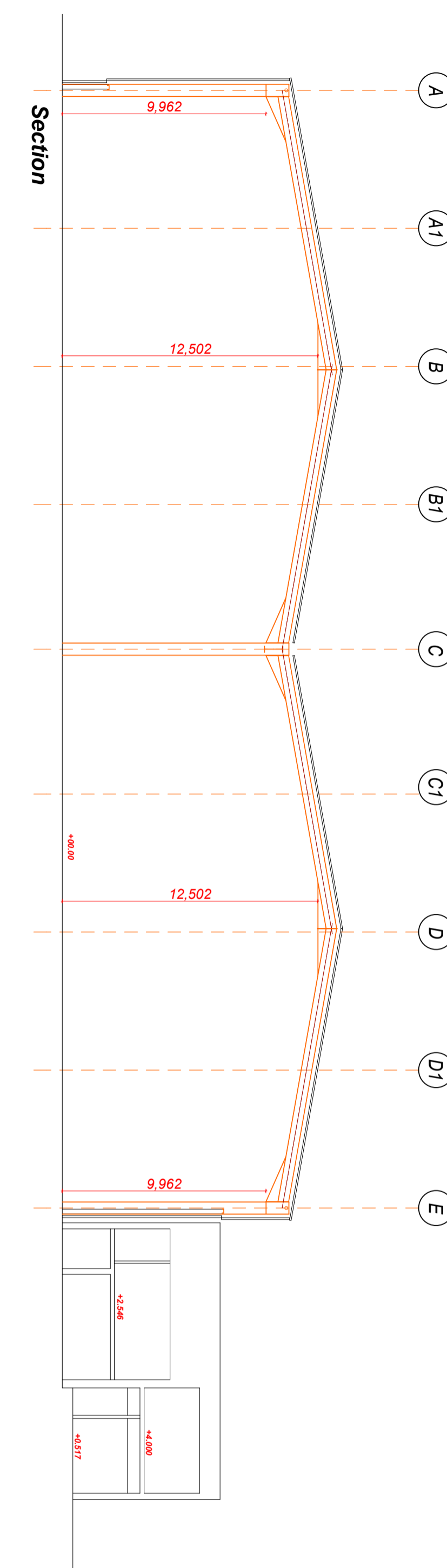
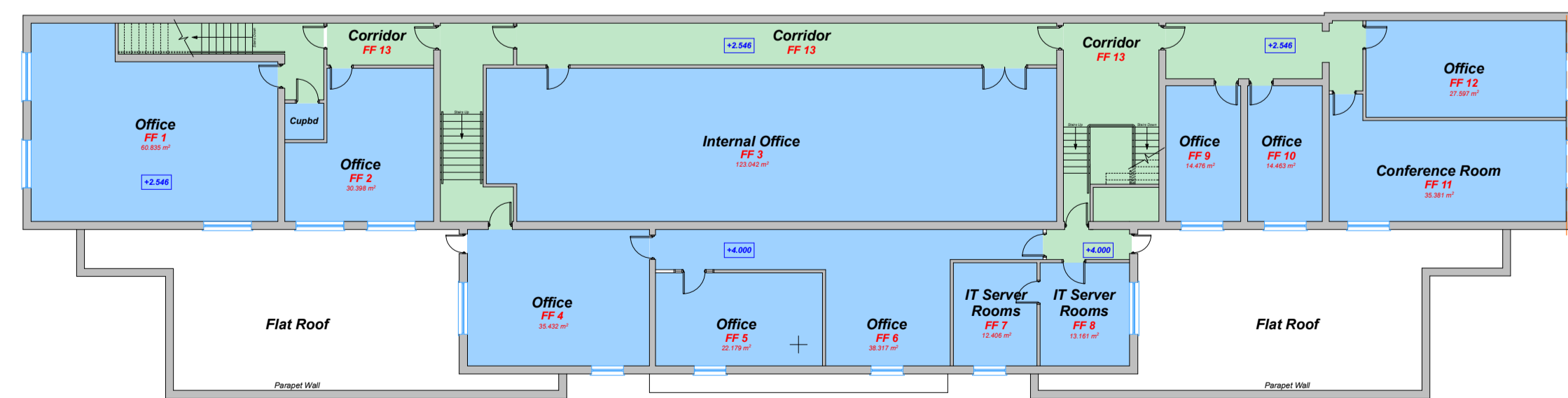


Existing Ground Floor Plan
Office Building No. 1
Scale 1:200
7,900 sq ft

Room	Size	Area
Office GF2	4.250 x 3.480mm =	14.77m ²
Office GF3	3.687 x 3.303mm =	12.18m ²
Office GF4	4.607 x 3.428mm =	15.79m ²
Office GF5	4.607 x 3.349mm =	15.43m ²
Conference	6.078 x 5.900mm =	35.85m ²
Room GF6	4.607 x 3.600mm =	16.61m ²
Office GF22	4.607 x 3.363mm =	15.49m ²
Office GF23	4.607 x 3.363mm =	15.49m ²
Office GF24	4.607 x 3.363mm =	15.49m ²
Office GF25	4.607 x 3.550mm =	16.25m ²
Office GF26	3.687 x 3.303mm =	12.18m ²
Office GF30	3.708 x 6.658mm =	24.64m ²
Office GF31	3.989 x 2.818mm =	11.24m ²
Office GF36	1.840 x 6.500mm =	11.95m ²

Room	Size	Area
Office FF1	7.452 x 9.325mm =	69.54m ²
Office FF2	3.182 x 5.071mm =	16.13m ²
Office FF3	5.787 x 21.543mm =	124.64m ²
Office FF4	5.156 x 6.877mm =	35.45m ²
Office FF5	3.516 x 6.308mm =	22.19m ²
Office FF6	5.156 x 4.706mm =	24.27m ²
Office FF7	5.122 x 2.826mm =	14.48m ²
Office FF10	5.156 x 2.824mm =	14.46m ²
Conference	3.812 x 8.849mm =	33.76m ²
Office FF12	3.650 x 7.551mm =	27.60m ²

Existing First Floor Plan
Office Building No. 1
Scale 1:200
6,170 sq ft



Indicative Site Plan - Not to scale



Project Title: Site and Buildings Layouts			
Location: 468-472 Castlereagh Road, Belfast, BT5 6RG			
Drawing Title: Office Block No. 1 & Studio A Drawings			
Scale: 1:200 @ A1	Date: 21.08.19	Project No: TD 389	Drawing No: 004