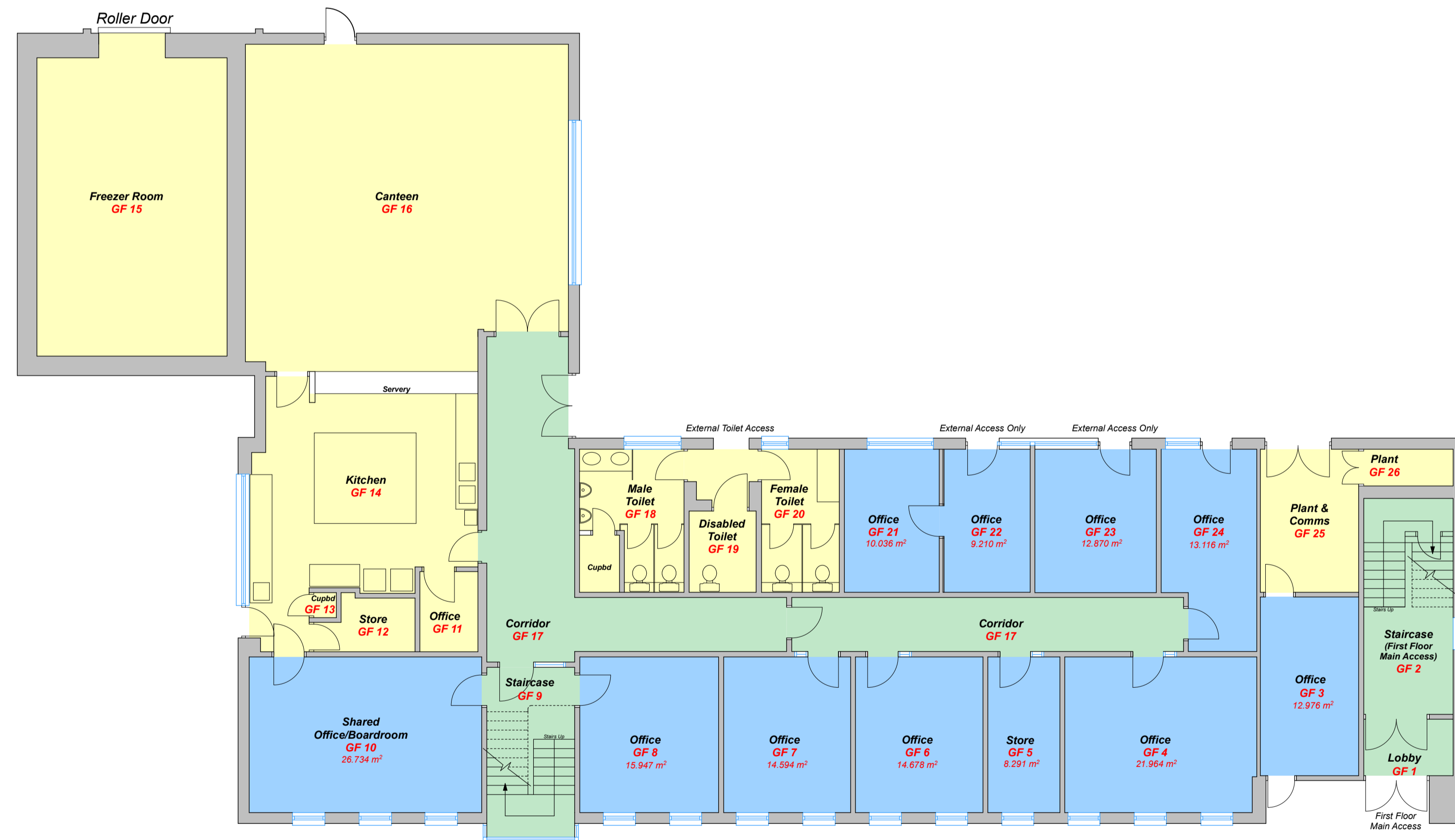
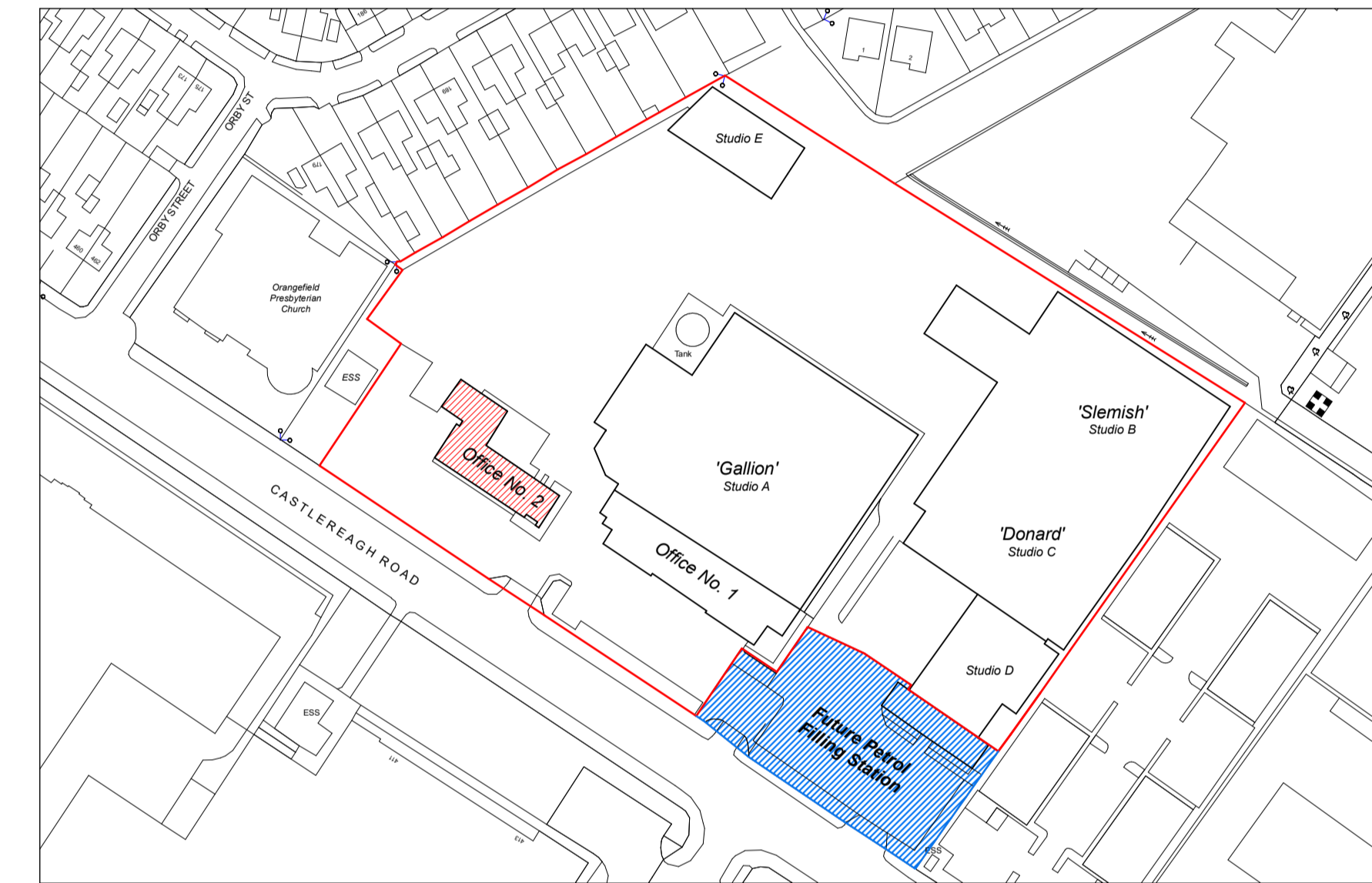


Existing First Floor Plan
Office Building No. 2
 Scale 1:100
 3,440 sq ft



Existing Ground Floor Plan
Office Building No. 2
 Scale 1:100
 4,900 sq ft

Room	Size	Area
Office FF1 -	4,200 x 5,220mm =	21.92m ²
Office FF2 -	4,200 x 3,940mm =	16.55m ²
Office FF3 -	4,200 x 3,200mm =	13.44m ²
Office FF4 -	4,200 x 3,290mm =	13.82m ²
Office FF5 -	4,200 x 3,470mm =	14.57m ²
Office FF13 -	3,920 x 3,270mm =	12.82m ²
Office FF14 -	3,920 x 3,180mm =	12.47m ²
Office FF15 -	3,920 x 3,130mm =	12.27m ²



Indicative Site Plan - Not to scale

Room	Size	Area
Office GF3 -	4,860 x 2,670mm =	12.98m ²
Office GF4 -	4,230 x 5,100mm =	21.96m ²
Office GF5 -	4,230 x 1,960mm =	8.29m ²
Office GF6 -	4,230 x 3,470mm =	14.68m ²
Office GF7 -	4,230 x 3,450mm =	14.59m ²
Office GF8 -	4,230 x 3,770mm =	15.95m ²
Office GF21 -	3,900 x 2,580mm =	10.04m ²
Office GF22 -	3,900 x 2,340mm =	9.21m ²
Office GF23 -	3,900 x 3,300mm =	12.87m ²
Office GF24 -	5,500 x 2,600mm =	13.12m ²
Boardroom GF10 -	4,230 x 6,320mm =	26.73m ²



Project Title: Site and Buildings Layouts			
Location: 468-472 Castlereagh Road, Belfast, BT5 6RG			
Drawing Title: Office Block No. 2 Drawings			
Scale: 1:100 @ A1	Date: 21.08.19	Project No: TD 389	Drawing No: 003